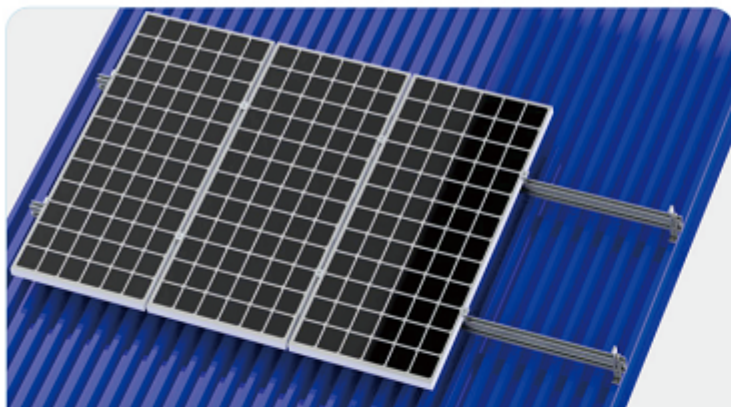
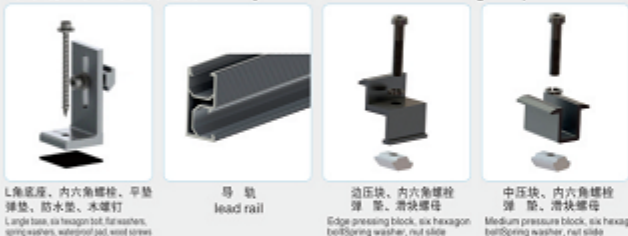




彩钢瓦屋顶L角支架



本系统由以下零部件组成/This system consists of the following components:

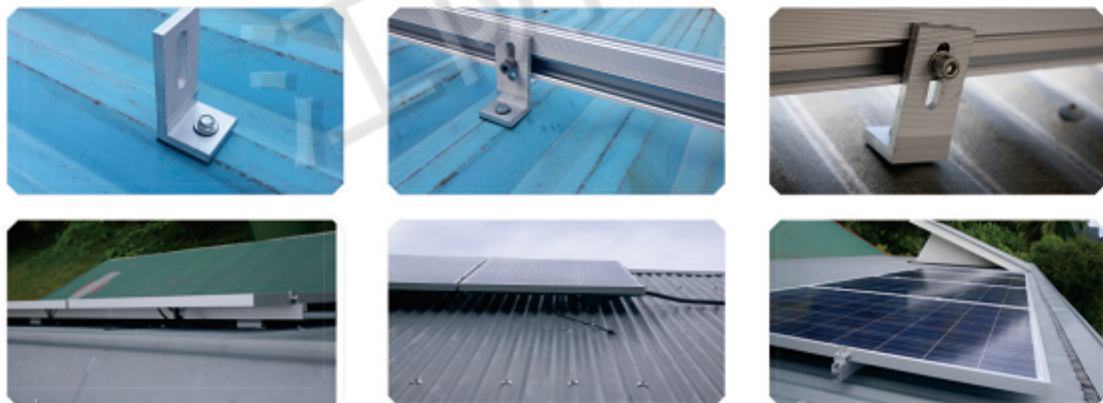


产品说明/DESCRIPTION:

- 安装位置/Installation place:
彩钢瓦屋面/Caigang watts roof
- 斜面支架组件/Module slop:
根据实际需求/According to the practical demand
- 拉拔力/Drawing force:
1000N
- 风力承载能力/Wind load:
40m/s, 32.5kg/m², 13级
- 雪载承受力/Snow load:
70kg/m²
- 支架类型/Module type
框架/Frame
- 材料/Material:
铝型材/Aluminium profile
- 颜色/Colour:
本色/Natural
- 使用年限/Warranty time:
25 years.

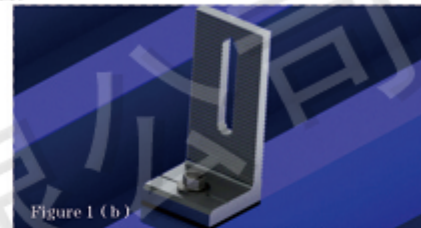
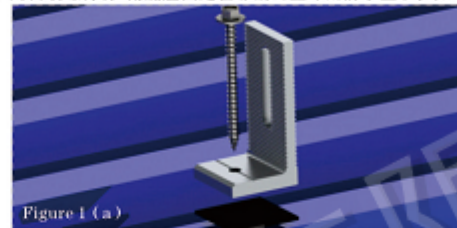
- 优势/ADVANTAGES:
1. 美观/Good Appearance.
 2. 简便易安装/Easy and flexible Installation.
 3. 多样化设计/Diversified Application.
 4. 重量轻/Light dead-weight.
 5. 节省安装材料/The mounting system materials are saved.

工程实例照片



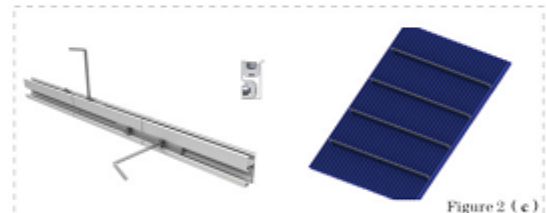
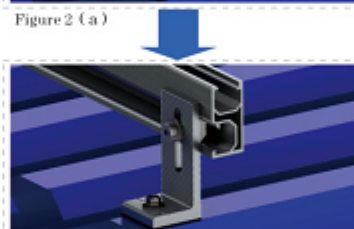
1 第一步/First step

By tapping screws L angle base is fixed on the color steel tile on (with waterproof pad), as shown in the following figure: 用自攻螺钉将L角底座固定在彩钢瓦上(配防水垫), 如下图:



2 第二步/Second step

The guide with the M8*25 inner six corner bolt, flat washers, spring washers, slider nut is fixed on the base of L angle, as shown below: 将导轨用M8*25的内六角螺栓、平垫、弹垫、滑块螺母固定在L角底座上, 如下图:

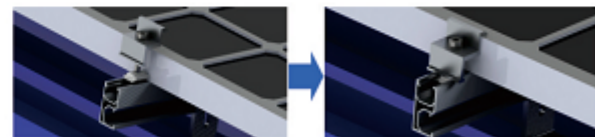
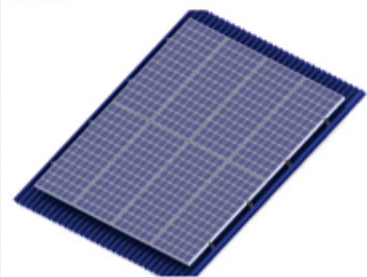


Note: when the array is rather long, guide rail and the guide rail between the connecting piece is fixed, pictured above: 备注: 当阵列比较长时, 导轨与导轨之间用导轨连接件固定, 如上图:

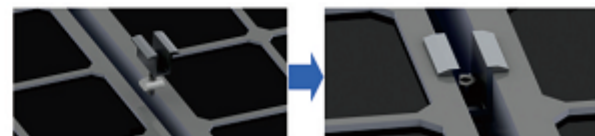
3 第三步/Third step

Will be built with edge block, block is fixed on the rail pressure.

The following diagram: 将组件用边压块、中压块固定在导轨上。 如下图:



边压块固定



中压块固定